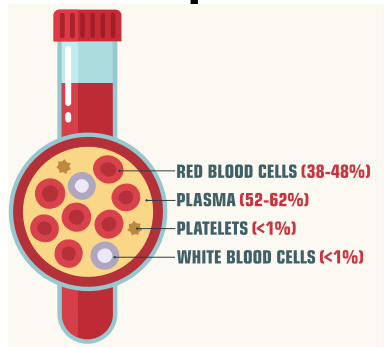


**Blood**



**plasma**

watery liquid that blood cells are suspended in and waste is carried

**red blood cells**

carry oxygen

**white blood cells**

defend us and attack threats

**platelets**

clot blood when wounds occur

**carries nutrients**

carries oxygen  
cleans waste  
protects



arteries only carry deoxygenated blood

blood is **NOT blue**  
Only blue to show difference in blood through diagrams

blood is **bright red** (oxygenated) or **dark red** (deoxygenated)

**Circulatory system**

1 deoxygenated blood pumped to lungs

2 In lungs - blood disposes of carbon dioxide and picks up oxygen

3 oxygenated blood returns to the heart and is pumped around the body

**oxygenated blood**

**arteries**

(muscular tubes that carry blood away from the heart)

arteries become smaller and blood goes into...

**capillaries**

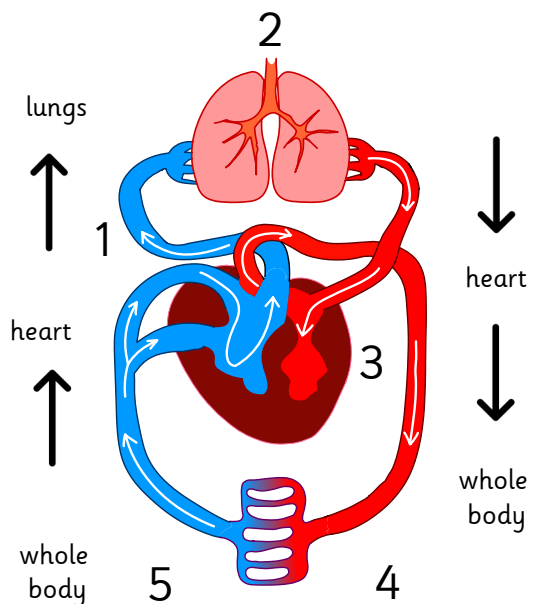
fine blood vessels close to body tissue and cells

**blood meets cells**

- blood → oxygen + sugar
- blood ← carbon dioxide + waste

5

blood returns to heart through **veins** (less muscular than arteries and closer to the skin)



**oxygen**

an element (gas) vital for life - red blood cells carry oxygen (oxygenated)

**deoxygenated**

blood that has given oxygen to cells and taken away carbon dioxide waste (scientific diagrams show this blood as blue, but we know it is dark red)

**carbon dioxide**

waste gas produced by cells and removed by plasma in the blood

